



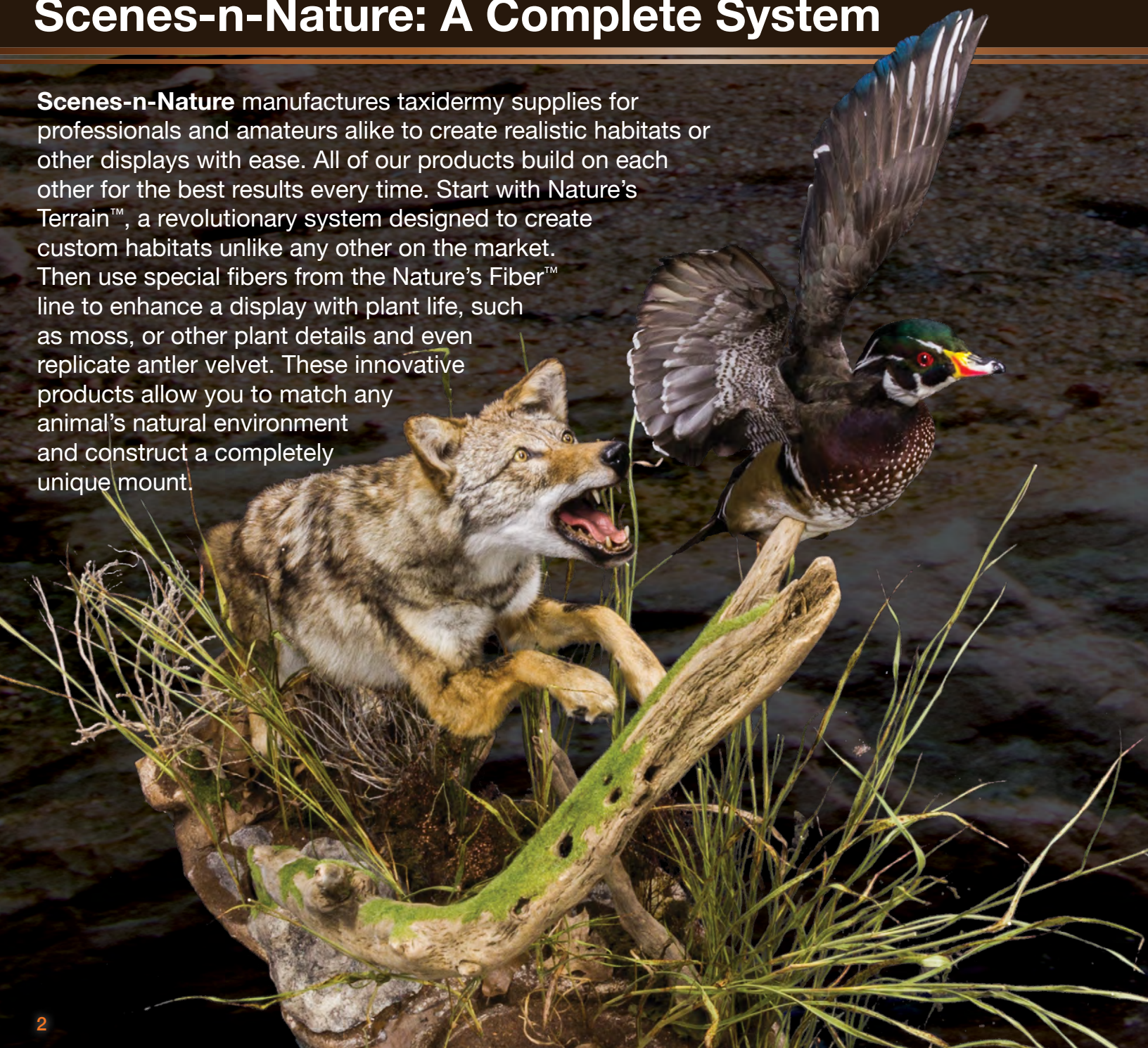
Scenes-n-Nature™ by WOODLAND®

A NEW APPROACH TO TAXIDERMMY



Scenes-n-Nature: A Complete System

Scenes-n-Nature manufactures taxidermy supplies for professionals and amateurs alike to create realistic habitats or other displays with ease. All of our products build on each other for the best results every time. Start with Nature's Terrain™, a revolutionary system designed to create custom habitats unlike any other on the market. Then use special fibers from the Nature's Fiber™ line to enhance a display with plant life, such as moss, or other plant details and even replicate antler velvet. These innovative products allow you to match any animal's natural environment and construct a completely unique mount.



Everything at your fingertips

We have product overview videos, as well as how-to videos that teach step-by-step methods, tips and techniques to get the best results with our products. Check out our YouTube channel or visit our website to watch these videos!



What our customers are saying:

"After trying these products, I am amazed by what Woodland is doing with their Scenes-n-Nature line. These materials are top-of-the-line. We are going to be able to do so much more with these products. I can't wait to see what else they have to offer and how this will impact taxidermy moving forward."

— **Bob "Hutch" Hutchinson**
Award-Winning Master Taxidermist
and World Show Habitat Judge



Subscribe to our YouTube channel for how-to videos and more



Learn what products are coming, the shows we're attending and more when you follow us on Facebook



Check out the work of fellow taxidermists and see the endless results you can achieve

Visit our website and join us on social media to get the latest product announcements, videos and other information. Subscribe to our YouTube channel and follow us on Facebook and Instagram. Be sure to tag us in your posts for a chance to be featured!

Contour Sheet™

Use the Contour Sheet to create custom habitat features, such as large, lightweight rocks, for a personalized mount. The pliable material can be shaped and reshaped, allowing you to create any level of detail in minutes. It holds its shape, and the surface mechanically bonds with Contour Sheet Plaster to create a thin, hard shell. Easily form a hollow shell around your understructure, or use Contour Sheet to make multiple rocks. There is no limit to what you can achieve.

- Easily shape and reshape large terrain features
- Strong, pliable and holds detail
- Maintains shape until it bonds with plaster

Patented product

ONLINE VIDEO



9 in Contour Sheet 4.5 sq ft (0.418 m²) NT6154



9 in Contour Sheet 9 sq ft (0.836 m²) NT6155



9 in Contour Sheet 13.5 sq ft (1.25 m²) NT6156



18 in Contour Sheet 9 sq ft (0.836 m²) NT6157



18 in Contour Sheet 18 sq ft (1.67 m²) NT6158



18 in Contour Sheet 27 sq ft (2.5 m²) NT6159

Contour Sheet Plaster

Contour Sheet Plaster offers an extended working time and bonds with the Contour Sheet to form a permanent, hard surface. The working time makes Contour Sheet Plaster ideal for forming larger rocks or other terrain features. Spray with the Rock Color System to create unique and realistic color variation.

- Specially formulated for Contour Sheet
- Color with Rock Color System pigments
- Extended working time



Contour Sheet Plaster 1/2 Gallon (1.89 L) NT6165



Contour Sheet Plaster 2 Gallons (7.57 L) NT6168



Plaster Tools

These tools are durable for continual use, and the non-stick material ensures simple cleanup. Since plaster cannot be poured down the drain, the Plaster Mixing Set allows you to easily mix and dispose of any plaster. The Plaster Brush Set has two brushes with specially designed staggered bristles for plaster application.

- Fast and simple cleanup
- Non-stick and durable for continual use
- Specially designed for use with plaster



Plaster Mixing Set NT6172



Plaster Brush Set NT6173



1 Form Contour Sheet around understructure.



2 Cover with Contour Sheet Plaster to create hard shell.



3 Use Rock Color System to color plaster.



4 Add plant details, such as moss, with Static Fiber.





Plaster Cloth

Plaster Cloth is ideal for modeling small to medium-sized, lightweight rocks and can also be used to fill gaps. This is helpful when working with rock panels or if you want to prevent floating feet between a form and the base. Apply while wet and it will dry to create a durable, hard shell. Plaster Cloth is designed to be used with the Rock Color System for natural color variation. Habitat materials can also be applied with realistic results.

- Make lightweight rocks quickly
- Fill gaps to blend features on base
- Use with Rock Color System pigments

**ONLINE
VIDEO**



Plaster Cloth
20 sq ft
(1.85 m²)
NT6148

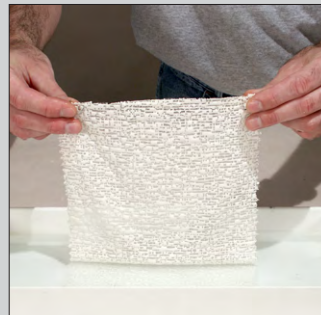


Plaster Cloth
40 sq ft
(3.71 m²)
NT6149



Plaster Cloth
60 sq ft
(5.57 m²)
NT6150

PLASTER CLOTH STEPS



1 Cut Plaster Cloth into desired strips. Dip and drag strip through water.



2 Lay wet Plaster Cloth over desired surface, bumpy side up.



3 Smooth plaster bumps with wet fingers to fill holes in cloth.



4 Overlap previous sheet by 50%. Repeat until project is covered.

Lite Rock Debris

Accent your base with Lite Rock Debris for further detail. These mixtures are half the weight of similar, same-size rocks and feature realistic colors to mimic the natural world. Each bag contains particles ranging from 1/32"-1/2" in size to achieve the best results. If desired, alter Natural Lite Rock Debris with the Rock Color System to create custom colors.

- Model debris accents on a base
- Color with the Rock Color System
- Particle sizes range from 1/32"-1/2" (0.793 mm -12.7 mm)
- 0.75 gallons (2.83 L) per bag



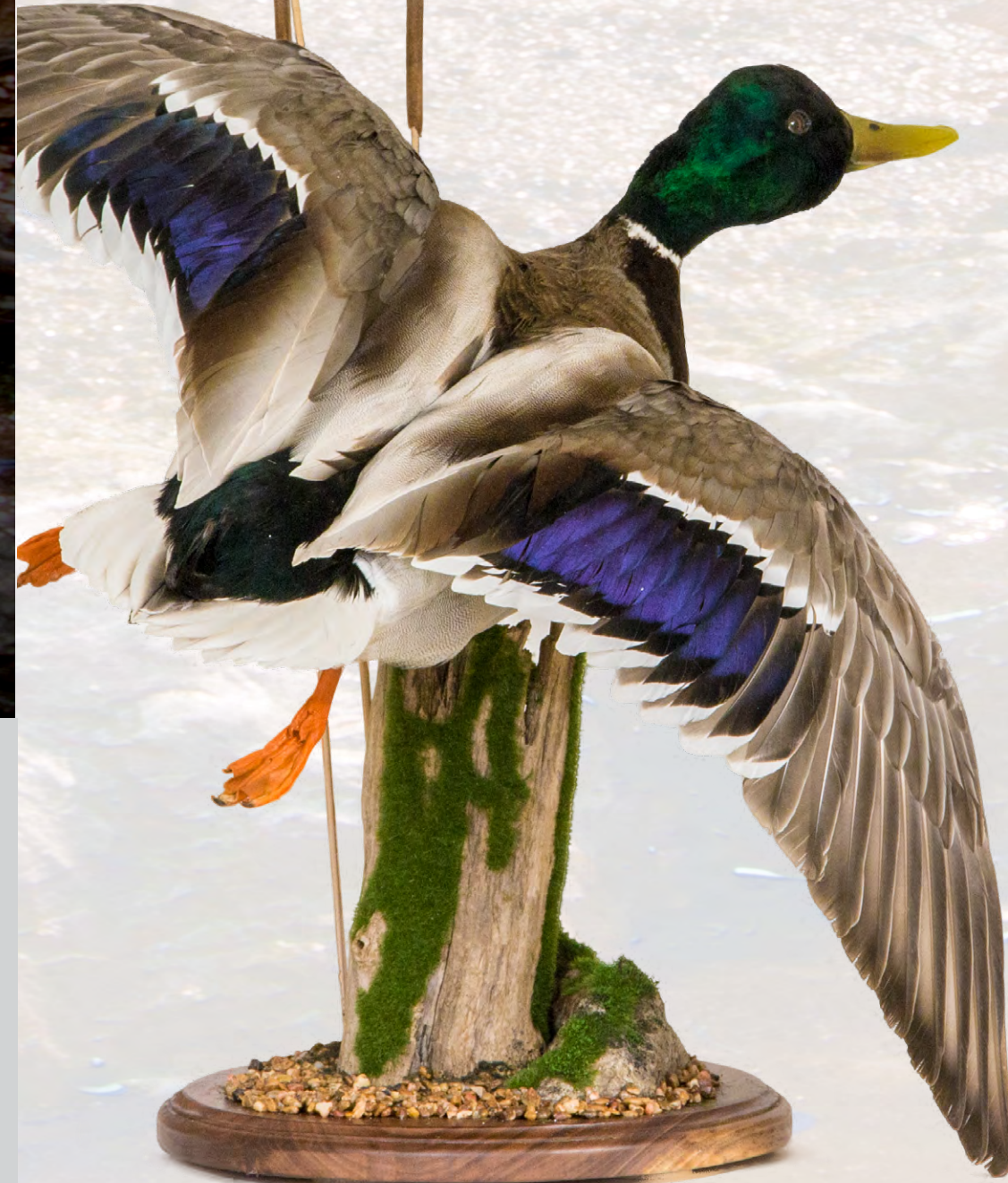
Lite Rock Debris – Brown
NT6193



Lite Rock Debris – Buff
NT6194



Lite Rock Debris – Natural
NT6195



Rock Color System

Use the Rock Color System to capture the colors of any region in minutes. These eight specially formulated, liquid pigments are designed to blend together, creating custom colors for the desired setting of a mount. The Rock Color System Kit provides all eight colors, so you can try them out in small quantities and determine which colors you prefer or need. You can also use Terrain Base Colors as an undercoat to cover the entire plaster surface. The liquid pigments are meant to be applied on plaster and work with the Spray Bottle Kit. To lock the colors in place, use Habitat Adhesive™ from the Nature's Fiber line.

- Easily colors plaster surface
- Non-toxic and water-soluble
- Colors blend together for realism

Pigments 8 fl oz (236 mL) per bottle

ONLINE VIDEO



White Pigment
NT6177



Concrete Pigment
NT6178



Stone Gray Pigment
NT6179



Slate Gray Pigment
NT6180



Black Pigment
NT6181



Raw Umber Pigment
NT6182

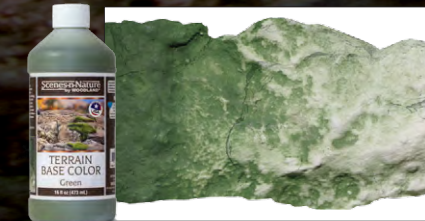


Burnt Umber Pigment
NT6183



Yellow Ocher Pigment
NT6184

Terrain Base Colors 16 fl oz (473 mL) per bottle



Terrain Base Color – Green
NT6185



Terrain Base Color – Earth
NT6186

Rock Color Kit



Rock Color System Kit
NT6176

Spray Bottle Set



The Spray Bottle Set is designed for use with the Rock Color System and other water-soluble materials. Use the bottles to spray Rock Color System liquid pigments onto plaster base for realistic terrain colors and detail. All eight bottles included have labels for easy measuring and space to write formulas.

- Each bottle holds up to 8 fl oz (236 mL)
- Labels included for easy measuring
- Keep colors easily accessible

Spray Bottle Set
NT6190

Using the Rock Color System



1 Spray lightest color dilution on 1/3 of rock.



2 Cover another 1/3 with second color dilution.



3 Apply dominant color over the entire rock.



4 Add black wash everywhere to blend, then let dry and seal color with Habitat Adhesive.

Static King®

Static King makes it easy to replicate plant life, additional plant details or velvet on your display. It has an ergonomic design and can be placed upside down for easy filling. The clear hopper allows you to see how much fiber you have left. It comes with different Sieve sizes for creating a varied effect using multiple lengths of fiber. A divider allows the use of multiple colors and sizes at the same time when modeling. Use with the Power Supply for an extra boost or it can be powered by 9V batteries.

- Clear hopper
- 360-degree Power Indicator Light
- Power via Power Supply or Batteries
- Non-slip rubber grip
- Easily interchange twist-lock Sieve
- Automatic discharge after use



Static King
NF6100

Patent pending

ONLINE
VIDEO



Everything you need for assembly is provided



Kit contents include three sieves, a hopper divider, thatch comb, screw, screwdriver, power cord and an anchor



Fully assembled Static King

Power Supply

When the Power Supply is connected to the Static King applicator, it gives the applicator an extra boost of strength for optimal results.



Power Supply
US Type A (120V)
NF6105



Power Supply
EURO Type C (240VAC)
NF6106



Power Supply
UK Type G (240VAC)
NF6107



Power Supply
AUS/NZ Type I (240VAC)
NF6108



1 Fill hopper with desired Static Fibers or fibers from Velvet Kits.



2 Attach one of the three sieves; small, large or divided.



3 Plug Static King into Power Supply or add 9V batteries into battery compartment.



4 Connect alligator clip to anchor. Place anchor near adhesive to activate static application. Turn on Static King and shake in gentle side-to-side motion to apply fibers.

Static Fiber™

Static Fiber is a special material that stands upright when it is applied with the Static King. Use Static Fiber to model different plant life in a habitat, such as moss. Blend multiple lengths and colors of Static Fiber to replicate all phases of vegetation growth.

- Model habitat plant life
- Add details to plants and mosses
- Blends with other colors and sizes
- Stands vertical when used with Static King

NF6115—NF6130

2mm-70g/package, 4mm-42g/package, 7mm-42g/package, 12mm-28g/package



2mm	NF6115	2mm	NF6116	2mm	NF6117	2mm	NF6118
4mm	NF6119	4mm	NF6120	4mm	NF6121	4mm	NF6122
7mm	NF6123	7mm	NF6124	7mm	NF6125	7mm	NF6126
12mm	NF6127	12mm	NF6128	12mm	NF6129	12mm	NF6130

ONLINE VIDEO

Adhesives

Nature's Fiber adhesives are specially formulated to work with Velvet Kits and Static Fibers. Fiber Tac™ is the right viscosity for adhering the fibers, and Habitat Adhesive™ seals the materials to a base.

- Water soluble
- Applies materials easily
- Dries to clear, matte finish



Fiber-Tac™
NF6102
12 fl oz (354 mL)



Habitat Adhesive™
NF6099
16 fl oz (473 mL)



Habitat Sprayer™
NF6098
holds 8 fl oz (236 mL)



Fiber-Vac™

Fiber-Vac is the perfect strength for picking up loose fiber material but still leaves glued items behind. This cordless modeling vacuum features an ergonomic design and can access small areas. The Fiber-Vac is easy to empty and does not cause damage to excess material so it can be used again.

- Pick up and reuse excess material
- Touch up mount
- Access small areas
- Easy to empty
- Cordless design
- Battery Powered

Fiber-Vac
NF6101

ONLINE VIDEO



Applying Static Fiber



1 Cover desired area with Fiber-Tac.



2 Apply Static Fiber with Static King.



3 Vacuum any excess for reuse.

Velvet Kits

Each Velvet Kit comes with two bags of pre-blended fibers, one light and one dark, designed to complement each other for realistic velvet growth. Velvet Fiber is a special material that stands upright when it is applied with the Static King.

- Model deer velvet easily
- Two pre-blended colors
- Velvet size accurate for antler type
- Colors blend together for realistic appearance
- Stands vertical when used with Static King



ONLINE
VIDEO

Whitetail Deer Velvet Kit
1 bag of 4mm light fibers - 31g
1 bag of 2mm dark fibers - 41g
NF6140



Mule Deer Velvet Kit
1 bag of 4mm light fibers - 31g
1 bag of 2mm dark fibers - 41g
NF6141



Elk Velvet Kit
1 bag of 7mm light fibers - 74g
1 bag of 4mm dark fibers - 96g
NF6142



Caribou Velvet Kit
1 bag of 7mm light fibers - 80g
1 bag of 4mm dark fibers - 103g
NF6143



Velvet Base™

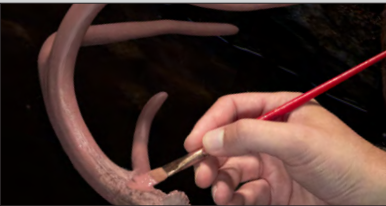
Use Velvet Base to paint antlers, before applying fibers, for optimal realism. This dark color resembles the skin seen beneath the Velvet Fibers and helps Fiber-Tac adhere to antler.

- Model realistic velvet skin color
- Primer for Fiber-Tac
- Specially formulated

Velvet Base
7 fl oz (207 mL)
NF6103



Applying Velvet Kit Steps



1 After antler prep, color with Velvet Base.



2 Brush Fiber-Tac on antler.



3 Apply Velvet with Static King.



“Using the Scenes-n-Nature Static King and Nature’s Fiber to construct the details required for commercial taxidermy is effortless. I can recreate antler velvet in-house and achieve incredibly lifelike moss and plant detail on bases. The device is revolutionary in the taxidermy industry, giving me the ability to add the texture of perpendicularly suspended fibers. The learning curve is short and fun. I’ve enjoyed introducing it to students and watching the immediate gratification of professional results.”

— **Chip Stamper**
Missouri Taxidermy Institute

Scenes-n-Nature™ by WOODLAND®

A **WOODLAND®** Quality Brand
scenesnnature.com

